



Technical Bulletin

178 Blackstone Avenue Jamestown NY 14701

www.jamestown.com

716.665.5313

Date: *September 16, 2011* No.: 032
To: Customer Service, Engineering, Estimating, Operations, Sales, Valued JMP Dealers
Subject: *Casework Enhancements, NEW Features & Benefits - Phase 1A*

Jamestown Metal Products, LLC, is pleased to announce several new features and benefits offered with our Casework Product Line, referred to internally as Phase 1A. A brief description, along with effectivity dates, is noted below:

- 1. Reintroduction of hem and flatten on all top rails and concealed cross rails that retain doors, to secure closure. Effective immediately.*
- 2. Elimination of unnecessary holes and slots in non-hinge side upright on door cabinets. Effective immediately.*
- 3. Introduction of micro-adjustable drawer fronts, for improved adjustability in the field after cabinet is installed and leveled. Effective with the roll-out of the new 2011 Wincat (NOTE: new top level item numbers; see following pages for numbering schema).*
- 4. Introduction of 20 GA mild steel drawer bodies as standard in all drawer cabinets; finished with our SEFA 8M-2010 compliant epoxy powder paint (Designer Grey 496). Our signature 22 GA stainless steel drawer bodies will still be an available option. Effective with the roll-out of the new 2011 Wincat (NOTE: new top level item numbers; see following pages for numbering schema).*
- 5. Introduction of a new 150 lb, full extension, SEFA 8M-2010 compliant drawer slide and suspension, which minimizes lateral movement of the drawer when fully extended. Effective with the roll-out of the new 2011 Wincat (NOTE: new top level item numbers; see following pages for numbering schema).*
- 6. Introduction of 20 GA mild steel drawer bodies as standard in all Tables and Aprons with drawers; finished with our SEFA 8M-2010 compliant epoxy powder paint (Designer Grey 496). Our signature 22 GA stainless steel drawer bodies will still be an available option. Effective with the roll-out of the new 2011 Wincat (NOTE: new top level item numbers; see following pages for numbering schema).*

Contact JMP for more information.

Casework Engineering
Jamestown Metal Products, LLC



Technical Bulletin

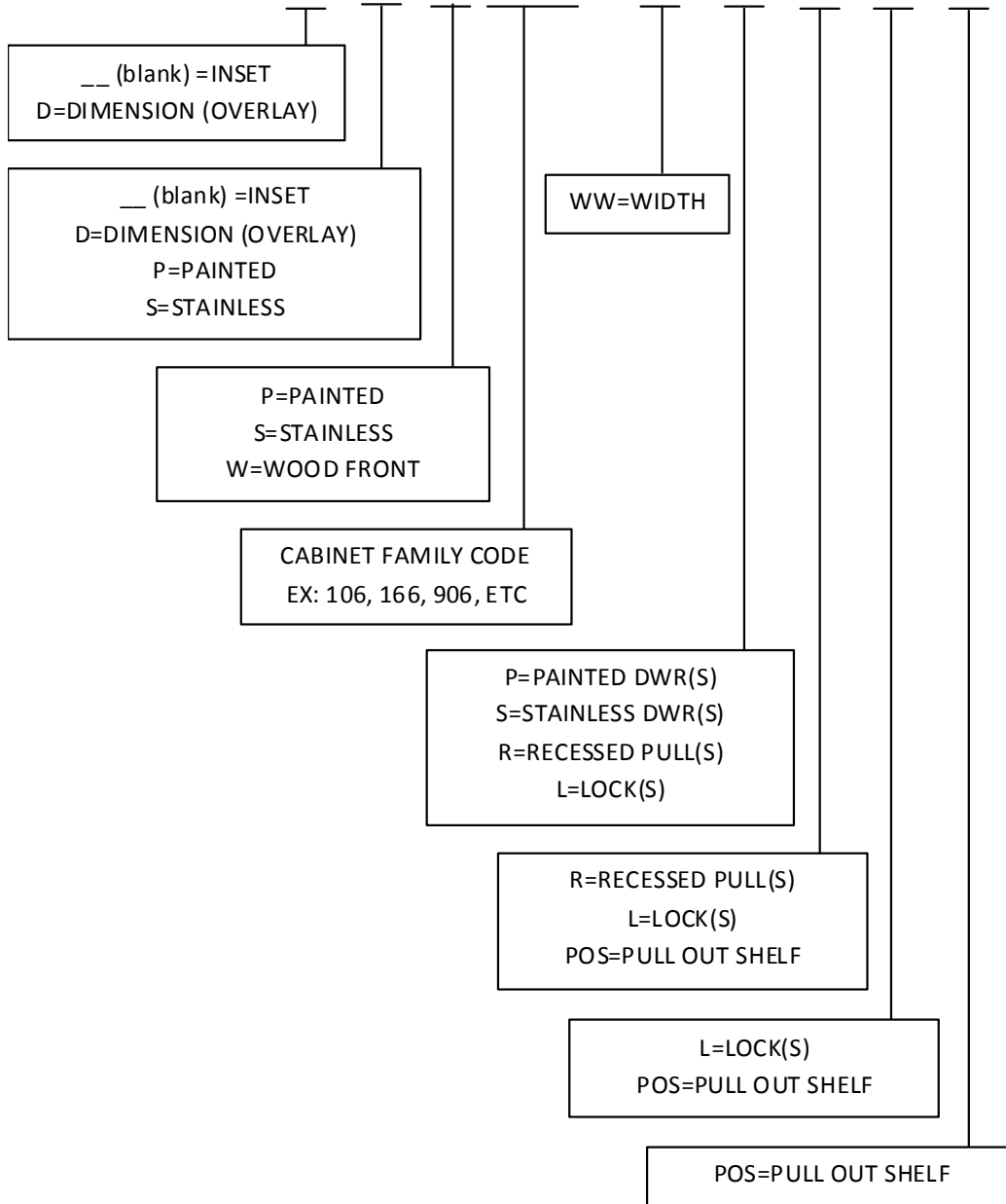
178 Blackstone Avenue Jamestown NY 14701

www.jamestown.com

716.665.5313

BASE & SUSPENDED CABINETS

[][][]XXX – WW [][][][]



Example 1: DPW106-36PRL = Dimension (overlay), painted, 2-drawer, 2-door cabinet, wood fronts*, 36" wide, with painted drawer bodies, recessed pulls and locks

Example 2: P106-36SRLPOS = Inset, painted, 2-drawer, 2-door cabinet, 36" wide, with stainless steel drawer bodies, recessed pulls, locks and pull out shelf

*Wood fronts quoted separately



Technical Bulletin

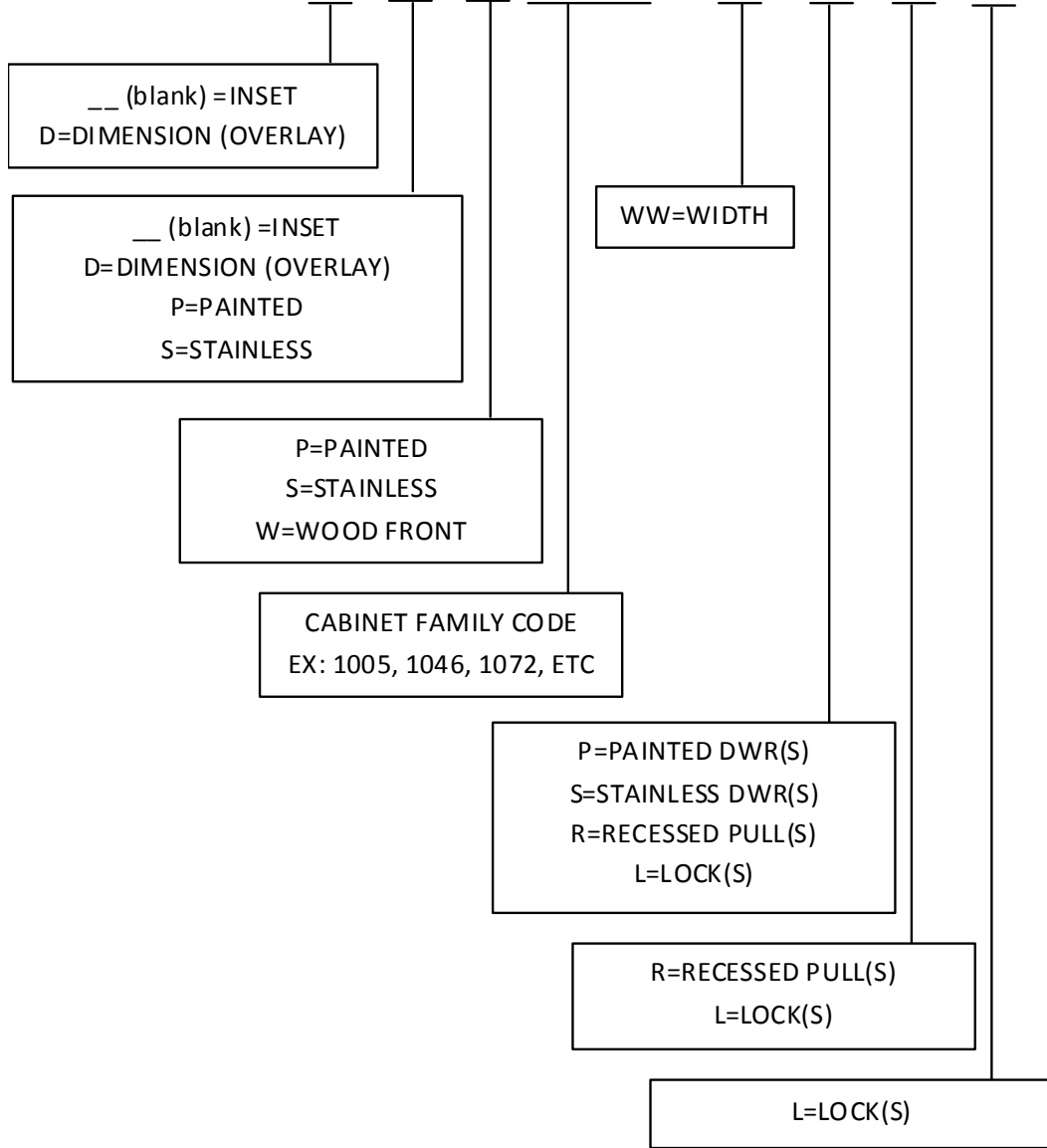
178 Blackstone Avenue Jamestown NY 14701

www.jamestown.com

716.665.5313

FLEXCORE MOBILE CABINETS

[][][]XXXX – WW [][][]



Example 1: DPW1005-30PRL = Dimension (overlay), painted, 1-drawer, 2-door cabinet, wood fronts*, 30" wide, with painted drawer bodies, recessed pulls and locks

Example 2: P1005-36SRL = Inset, painted, 1-drawer, 2-door cabinet, 36" wide, with stainless steel drawer bodies, recessed pulls and locks

*Wood fronts quoted separately



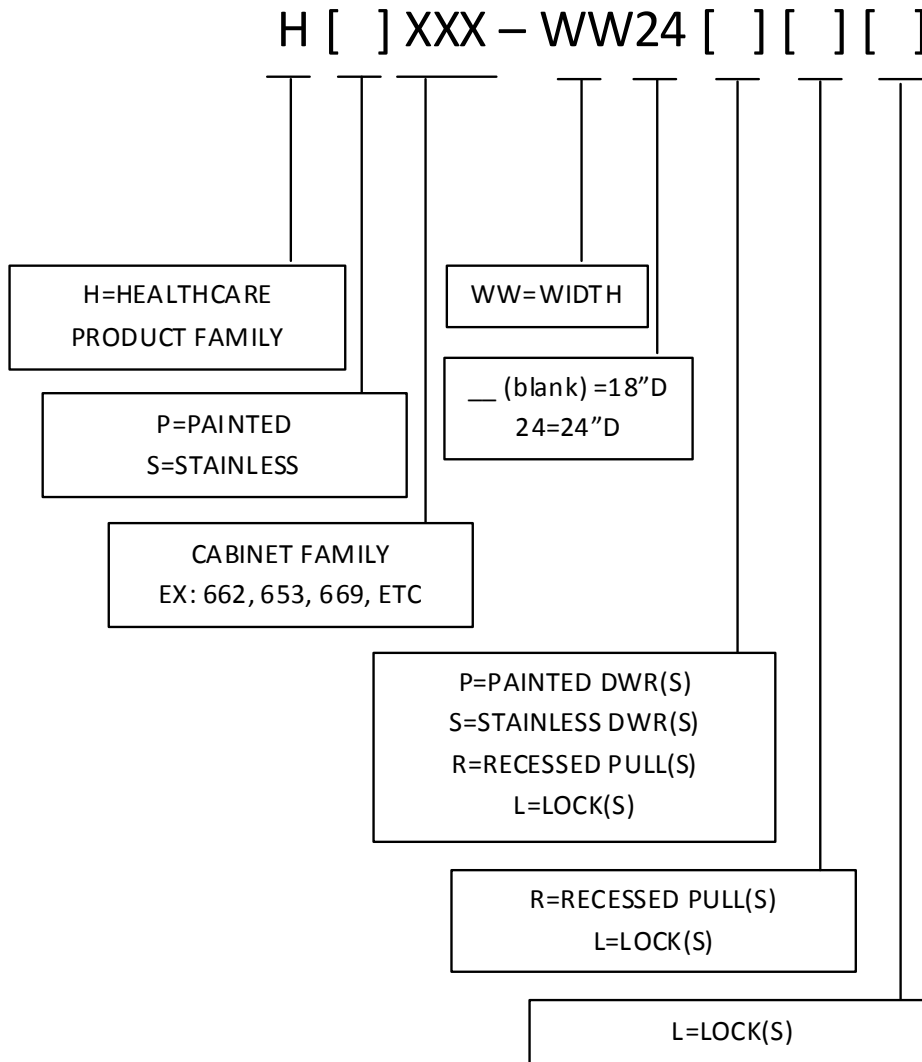
Technical Bulletin

178 Blackstone Avenue Jamestown NY 14701

www.jamestown.com

716.665.5313

HEALTHCARE CABINETS



NOTE 1: Healthcare Cabinets are not offered in Dimension (Overlay) construction.

NOTE 2: Healthcare Cabinets are not available with new 150 lb, full extension, SEFA 8M-2010 compliant drawer slide and suspension presently. Contact JMP if you require this for your application.

Example 1: HP660-3024PRL = Inset, painted, 30" wide, 24" deep, with painted drawer bodies, recessed pulls and locks

Example 2: HS653-24SRL = Inset, stainless, 24" wide, 18" deep, with stainless steel drawer bodies, recessed pulls, locks and casters



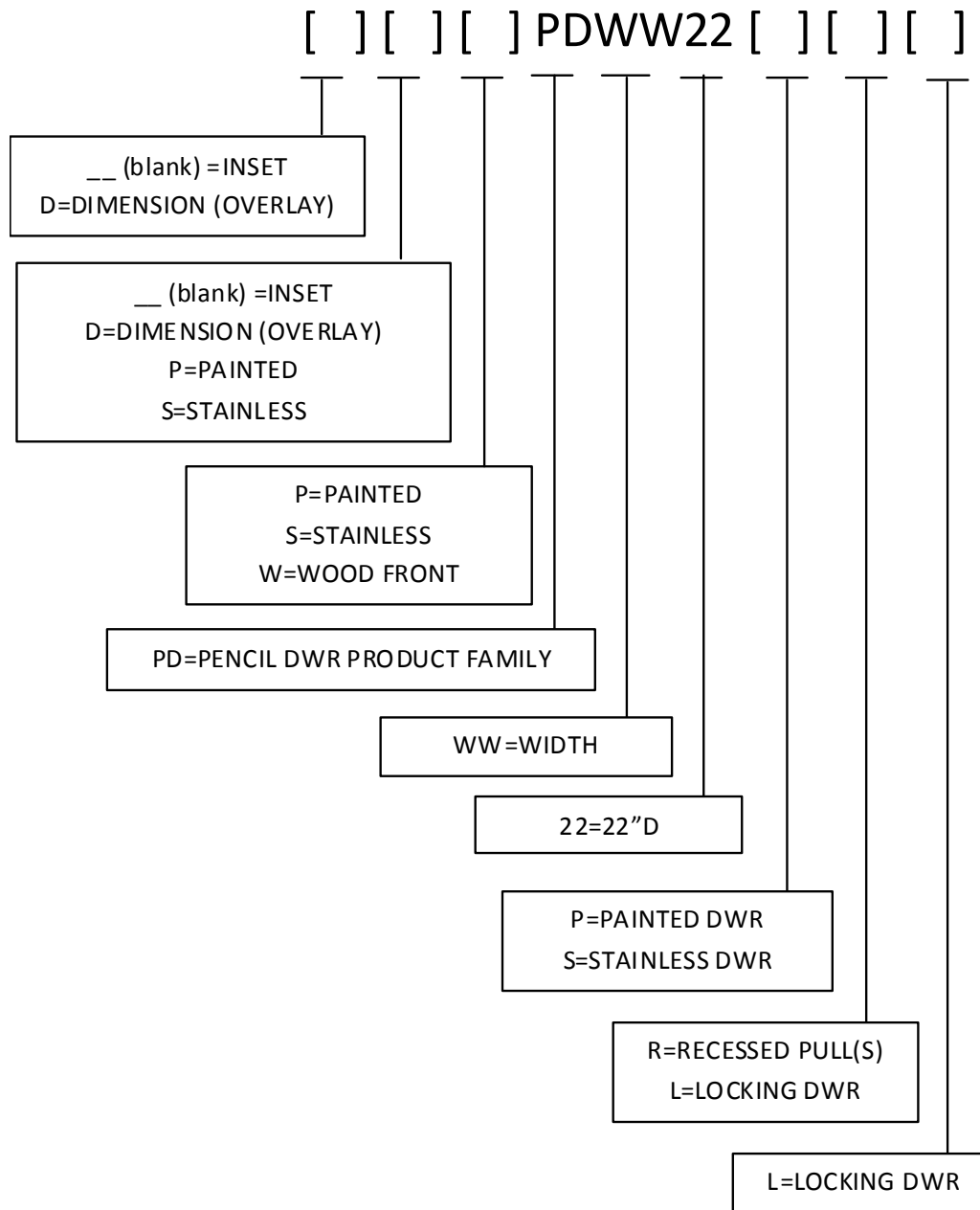
Technical Bulletin

178 Blackstone Avenue Jamestown NY 14701

www.jamestown.com

716.665.5313

PENCIL DRAWERS



NOTE: Pencil Drawers are not available with wood fronts presently. Contact JMP if you require this for your application.

Example 1: DPPD3022PRL= Dimension (overlay), painted, Pencil Drawer, 30" wide, 22" deep, with painted drawer bodies, recessed pulls and locks

Example 2: SPD1522SRL = Inset, stainless, 15" wide, 22" deep, with stainless steel drawer bodies, recessed pulls and locks



Technical Bulletin

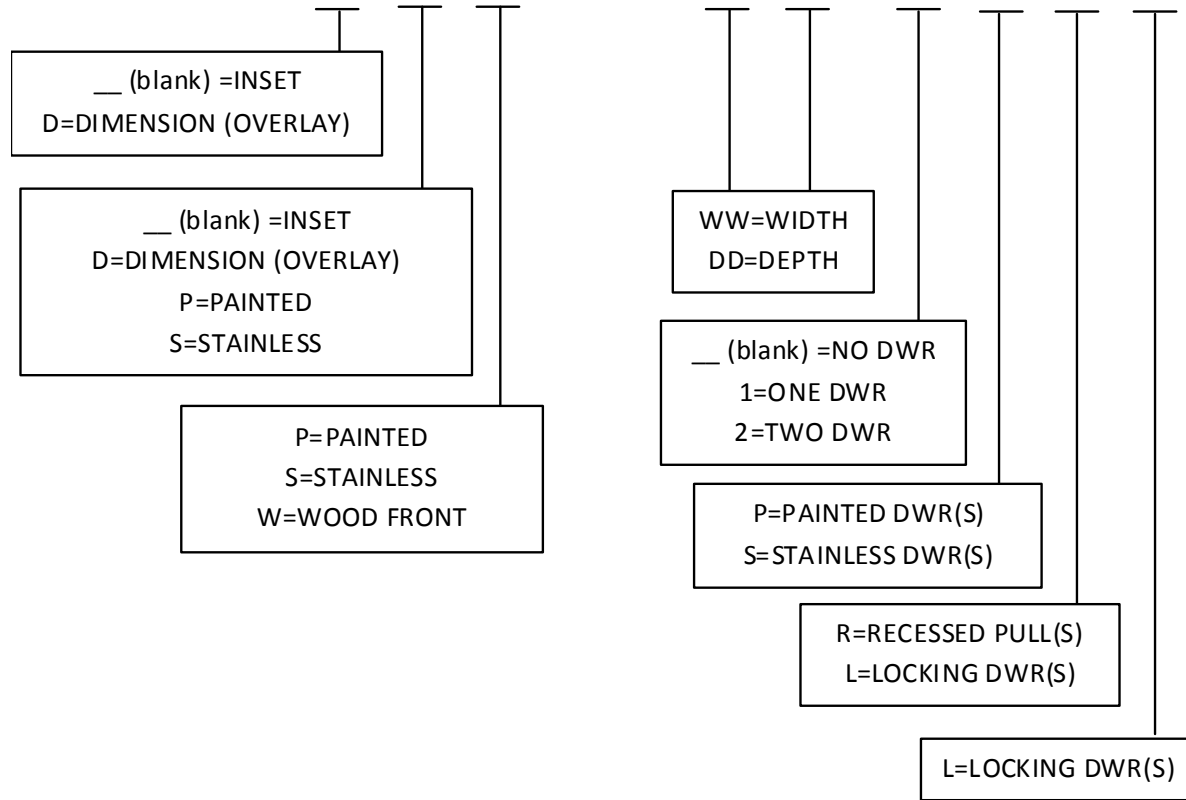
178 Blackstone Avenue Jamestown NY 14701

www.jamestown.com

716.665.5313

TABLE APRONS (TBA)

[][][] TBA – WWDD - [][][][]



NOTE: Table Aprons are not available with wood fronts presently. Contact JMP if you require this for your application.

Example 1: DPTBA-3022-1PRL = Dimension (overlay), painted, 30" wide, 22" deep, 1-drawer, painted drawer body, recessed pulls and locks

Example 2: STBA-2422-1SRL = Inset, stainless, 24" wide, 22" deep, 1-drawer, stainless steel drawer body, recessed pulls and locks



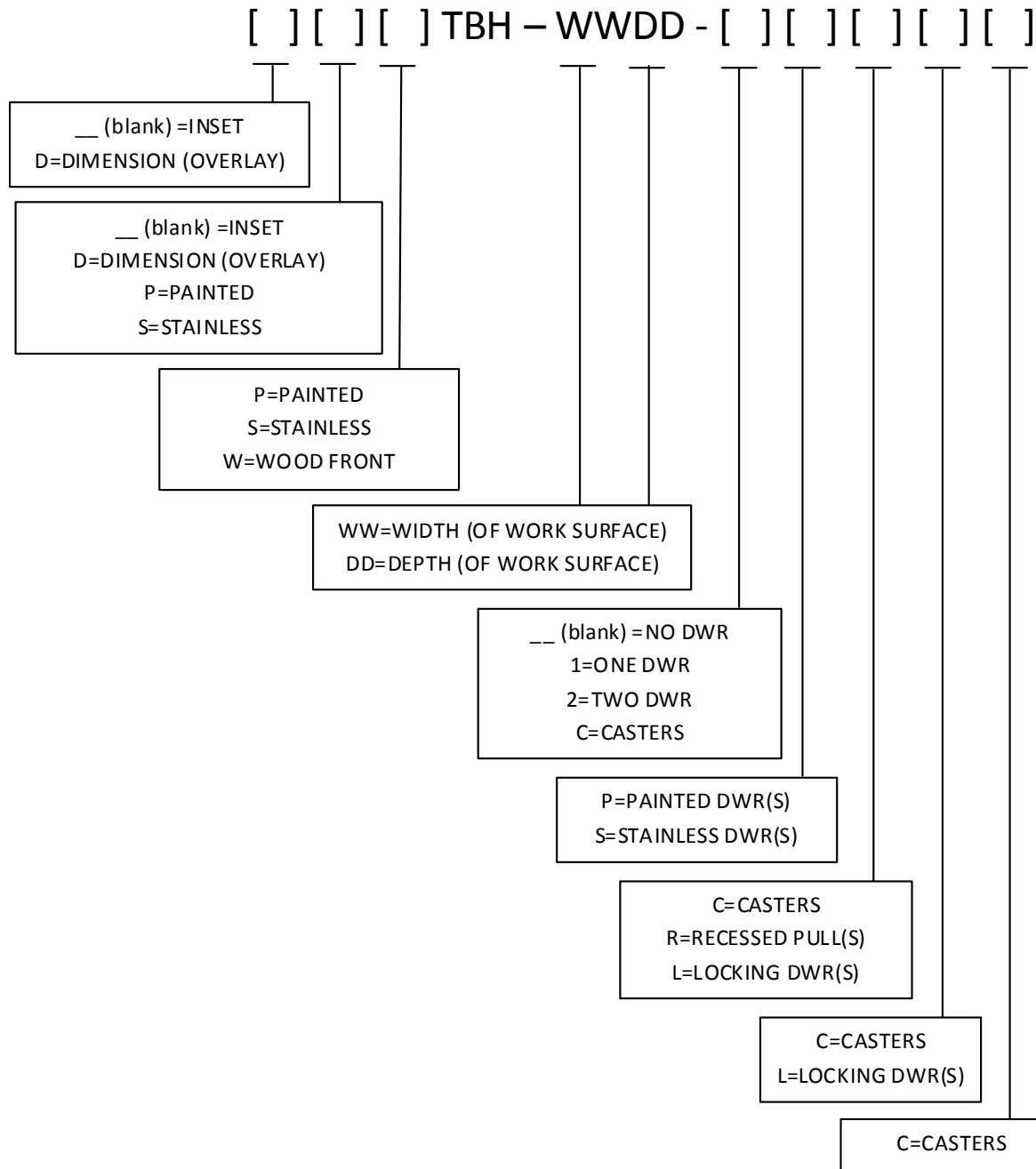
Technical Bulletin

178 Blackstone Avenue Jamestown NY 14701

www.jamestown.com

716.665.5313

TABLES (TBH) – STANDING HEIGHT



NOTE: Tables are not offered with wood fronts presently. Contact JMP if you require this for your application.

Example 1: DPTBH-3024-1PRL = Dimension (overlay), painted, 1-drawer, 30" wide, 24" deep, with painted drawer body, recessed pulls and locks

Example 2: PTBH-6024-2SRLC = Inset, painted, 2-drawer, 60" wide, 24" deep, with stainless steel drawer bodies, recessed pulls, locks and casters



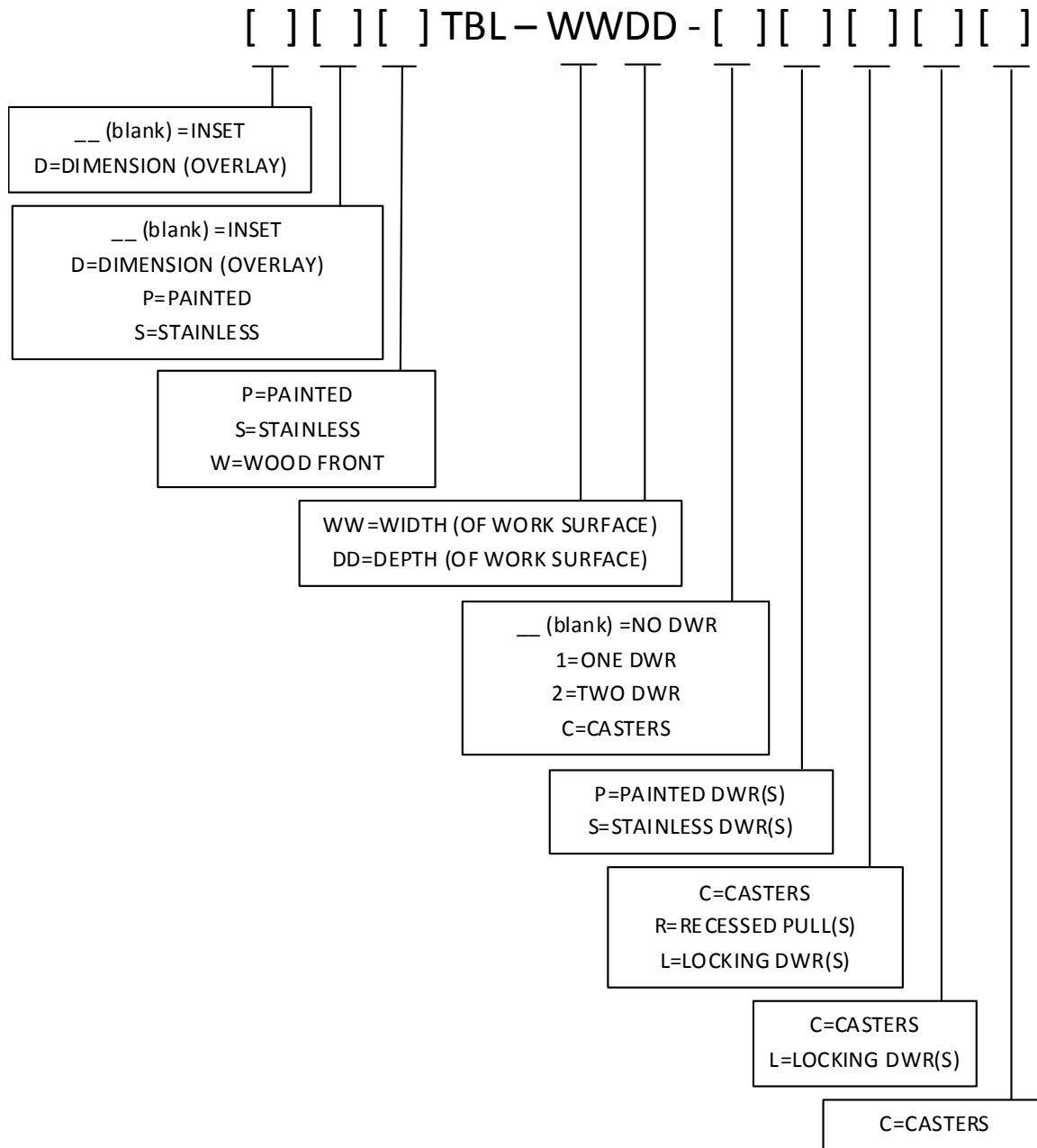
Technical Bulletin

178 Blackstone Avenue Jamestown NY 14701

www.jamestown.com

716.665.5313

TABLES (TBL) – SITTING HEIGHT



NOTE: Tables are not offered with wood fronts presently. Contact JMP if you require this for your application.

Example 1: DPTBL-3024-1PRL = Dimension (overlay), painted, 1-drawer, 30" wide, 24" deep, with painted drawer body, recessed pulls and locks

Example 2: PTBL-6024-2SRLC = Inset, painted, 2-drawer, 60" wide, 24" deep, with stainless steel drawer bodies, recessed pulls, locks and casters