



# TRUST as STRONG as STEEL

Base Cabinets are available in many styles of cupboard units, drawer units and drawer and cupboard units. They are available in standard widths of 15", 18", 21", 24", 30", 36", 42" and 48". Standard heights are 28.25", 31.875" and 35.5", and standard depth is 22". The features are provided to point out the main construction details. All JMP standard base cabinets have access through the rear for access to plumbing chase.




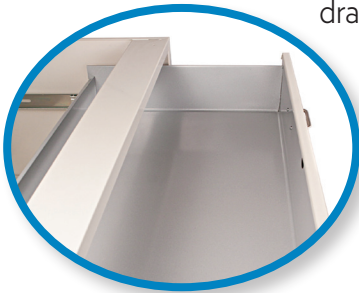
Independently certified.





Flammable storage cabinets are U.L. 1275 Listed.

## Drawer

True fully accessible drawer,  Environmentally conscious by design: using steel with 25% recycled content and reclaimed powder coating, recycled for drawer boxes. Optional stainless steel available.



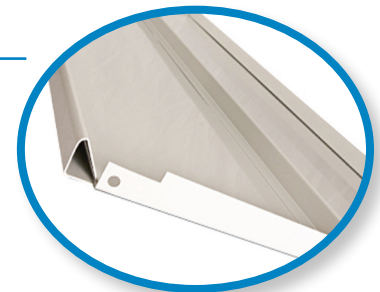
Interchangeable, interlocking drawer head, sound deadened for quiet operation. One piece drawer body with radiused bottom for easy cleaning. Full extension  150 pound dynamic drawer slide assembly mounted on welded channel assemblies.  Micro alteration screws for easy field adjustment.



Micro-adjustment screw for job-site drawer face final install adjustment!



## Adjustable Shelf

Full length and width adjustable shelf for maximum storage. Unique triangular support rails for added strength. Heavy duty plated steel shelf clips.



## Cabinet Face



Robust 1 1/4" flush corner construction for smooth seamless cabinet face. Rabbetted end panels and rails for built in dust protection.  Minimal holes in front post for aesthetically pleasing appearance.  Hem and flatten door stop for secure closure.





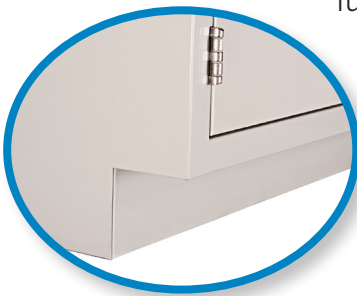
# TRUST as STRONG as STEEL

## Door

Two-piece door construction painted before assembly. Corrugated filled for added rigidity and quiet operation. 5-knuckle institutional type stainless steel hinge, 2" high. 14 Gauge hinge reinforcement. Rubber door bumpers. Stainless steel wire pull is standard with optional die-cast or ABS plastic recessed pull



## Cabinet Bottom and Base



Turned up case bottom with a radius at rear for increased strength and ease of cleaning. Completely enclosed toe space promotes laboratory cleanliness. Lower corner reinforcing gusset with 2 1/2" high adjusting or leveling bolt (all four corners). Recessed adjusting bolt access hole with removable plug button.



Innovative and customer focused, Institutional Casework Inc., continues to meet the demands of laboratory environments with Jamestown Metal Products Division.

## JAMESTOWN METAL PRODUCTS DIVISION

178 Blackstone Avenue • Jamestown NY 14701

Phone: 716.665.5313

Fax: 716.665.5121

International: 11.716.665.5313

International Fax: 11.716.665.5121

[www.jamestown.com](http://www.jamestown.com)