



## **ATTACHING WALL CASE TO A CORE**

**Tools Required:**

Philips Screw Driver No. 2 & 3 tips  
Hammer

No hardware kit required to attach a wall case to a core

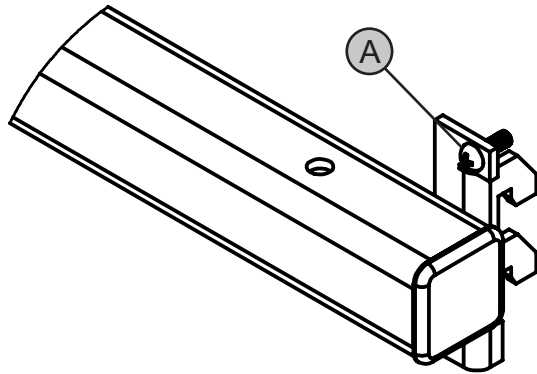
**Note 1:** There are two styles of hangers PWCH (Detail A) and PWCH-Offset (Detail B). The PWCH mounts tight against the face of the upright and is used most of the time. PWCH-Offset hangers are used on the 8 3/4" & 12" deep core (shown next page) to recess the cabinet inside between the uprights to provide for additional clearance above the work surface. If you use the PWCH-Offset hanger you will not be able to use an inside shelf behind the wall case.

**Note 2:** When you want to hang a wall cases inside the core as shown on the completely assembled view, the total width of the wall cases must be at 3" less than the core width.

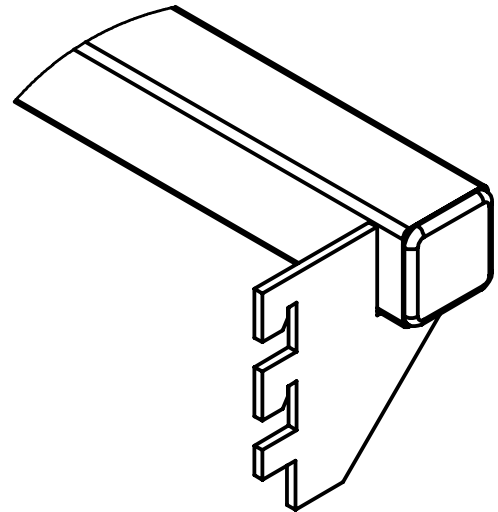
**Note 3:** When using the PWCH hangers on the face of the core upright, the wall case can extend over to the adjacent core with hangers, because the "J" hangers (G) attached to the back of the wall case are notched to facilitate clearing the core uprights.

**Note 4:** The illustration in the instruction shows the PWCH-Offset hanger. PWCH series hangers are install in a similar way.

1. If you are using the PWCH hanger, back out screw (A) before installing the hanger teeth into the upright slot.



Detail A  
PWCH Hanger



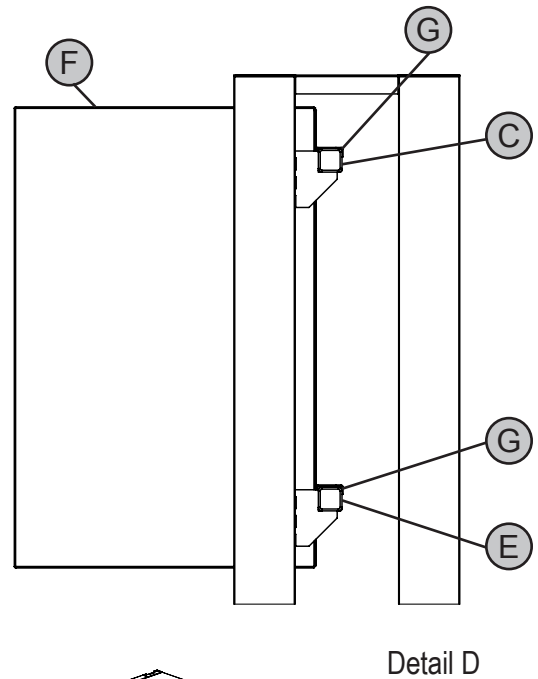
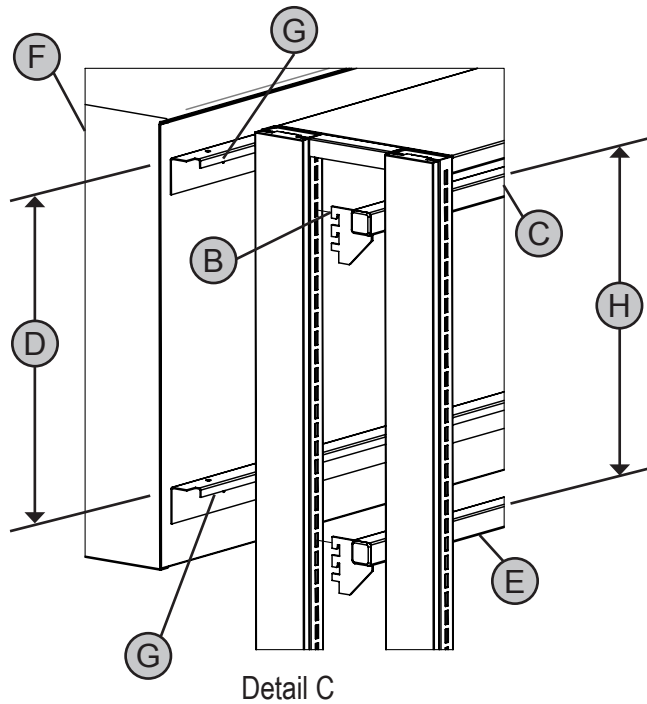
Detail B  
PWCH-Offset Hanger



## ATTACHING WALL CASE TO A CORE

*...continued from previous page*

2. Locate level and insert the upper hanger teeth (B) into the desired location. Make sure the teeth are completely down and engaged in the slotted upright, see Detail C.
3. Measure the distance (D) between the "J" hangers attached to the back of the wall case and locate and insert into the upright the lower hanger (E) on the core the same distance (H) apart.
4. After the PWCH hangers are completely engaged in the upright, screw (A), see Detail A, into the slot to lock the hanger in place before attaching the wall case.
5. Hang the wall case (F) on the hanger bars (C & E), positioning the cabinet so the back flanges (G) on the upper and lower "J" hangers securely hook behind the hanger bars, see Detail D.



Fully Assembled

